

The Missing Piece

Learners as Partners in Adult Education



Five Key Points

1. Students as partners at the center of adult education
2. Culture changes in adult education
3. Sustainable learner leadership through collaborative partnerships
4. From "College knowledge" to college success
5. Strategies for adult learner leadership



Students as partners at the
center of adult education



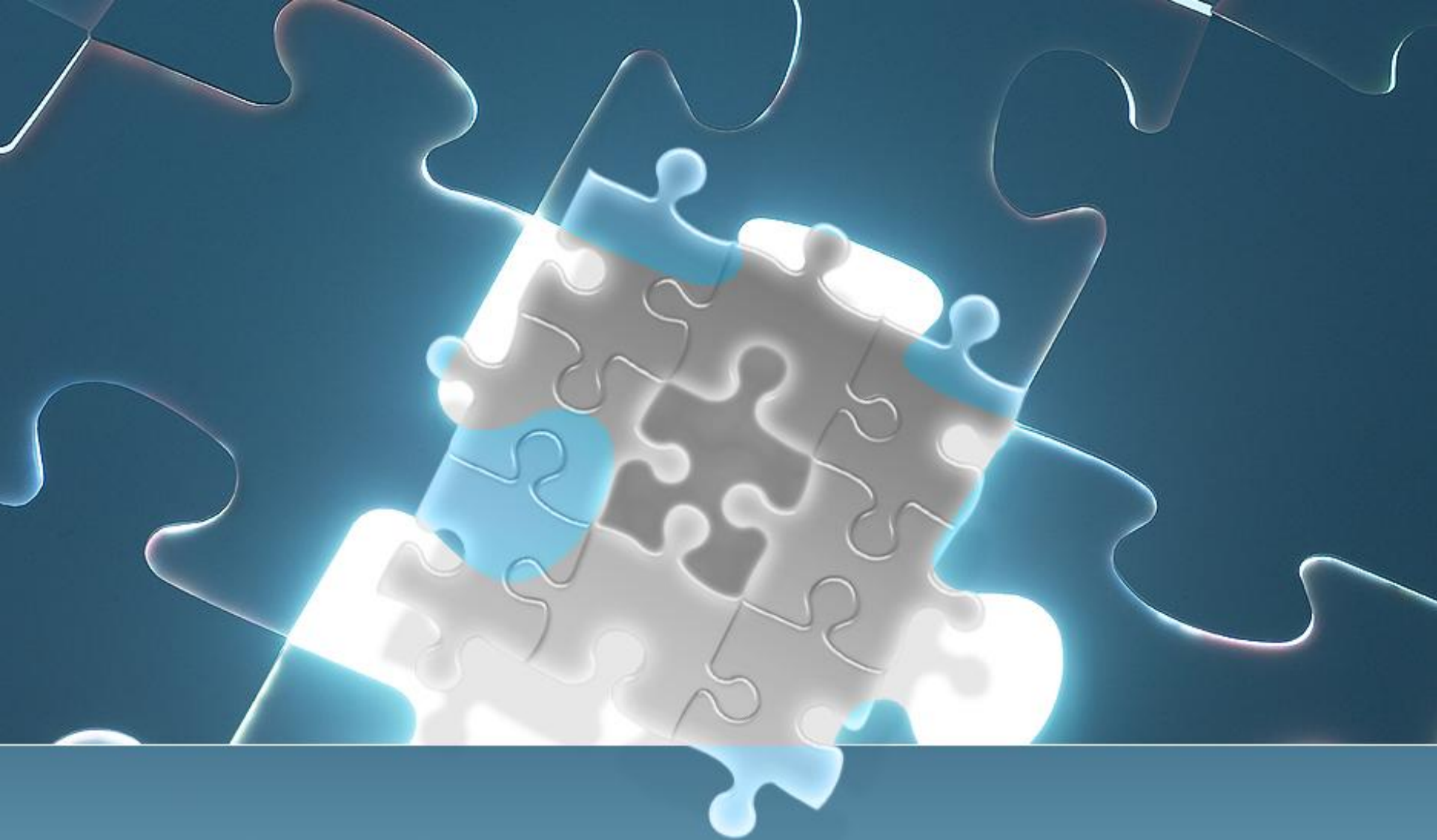
Adult Education Works

- Keeping students at the center
 - A strength-based approach
- Matching students strengths with the right leadership opportunities
 - Sometimes one has the right piece of the puzzle, but just not the right fit
- Eliminating gaps between transition to post secondary education
 - A step further – succeeding in college



Transformative Leadership

- Participation changes the level of capacity in both students and programs
- Culture and expectation of adult education
 - From service provider to leadership development



Culture Shifts in Adult Education



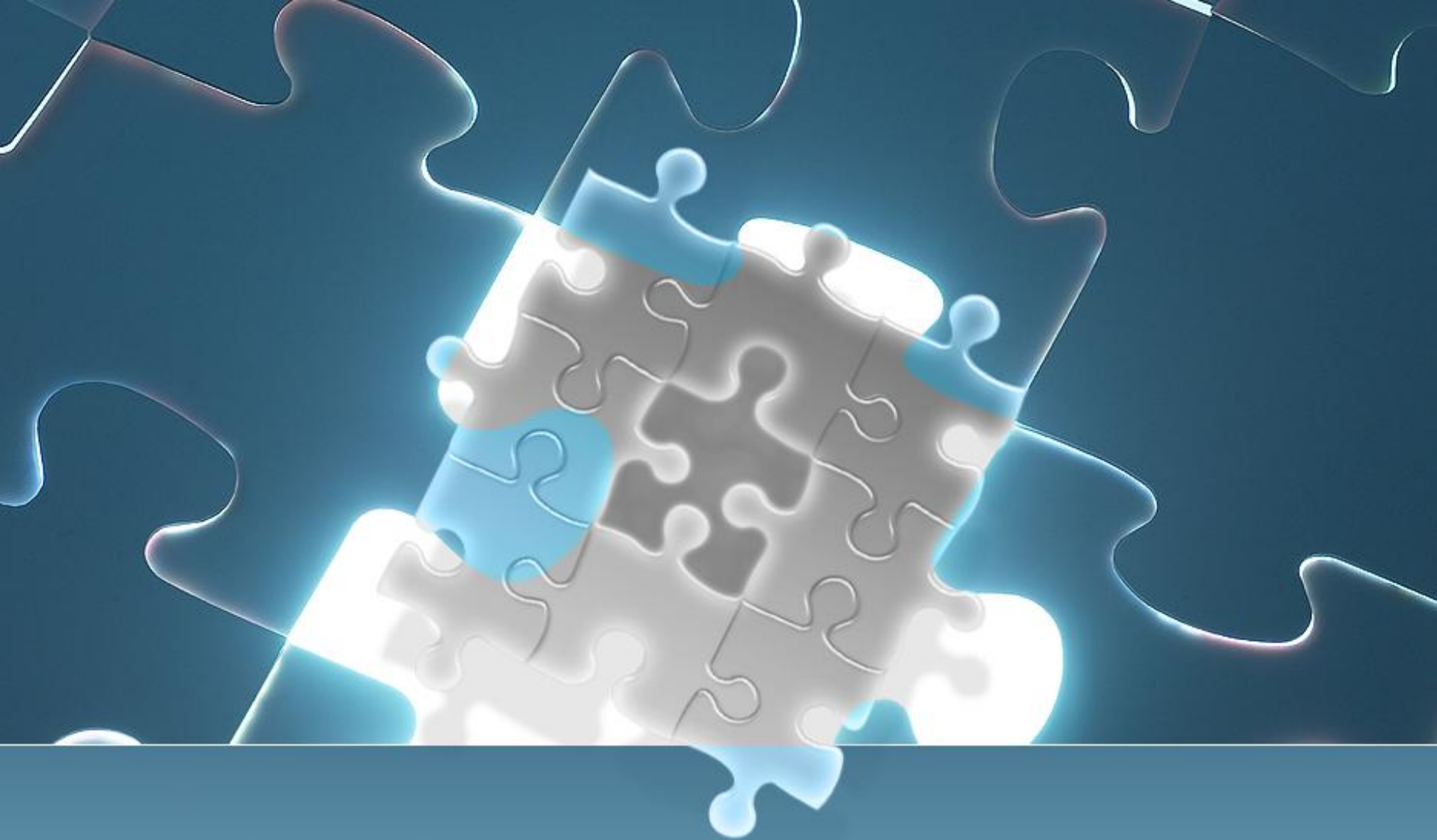
Matching Students

- **Creating Linkages**
 - Providers perspective
 - Intentional leadership
 - A core group of students from the program
 - Creating generations of leadership
- **Sustainable flows of knowledge & leadership**
- **Cycle of leadership**
 - Paying it forward
 - Alumni tracking students & alumni



Opportunities

- Listening to the learners
- Creating opportunities for learners to lead the way
- Research / evidence / gathering analysis
- Participatory process
- Governance / Authority towards education
- Planning / policy level
- Advocacy



From College Knowledge to College Success



College Knowledge

- Helping to create a balance
 - Not just school
 - The College experience
 - Lack of college knowledge
 - social component
 - Isolation
- Social resilience as important as academics



Sustainable Learner Leadership
through collaborative partnerships



Leadership Through Opportunity

- Transformation in the process of leadership
 - Students
 - Programs
 - System
 - Shifting the sense of Community
 - Connected in a positive way – breaking negative cycles



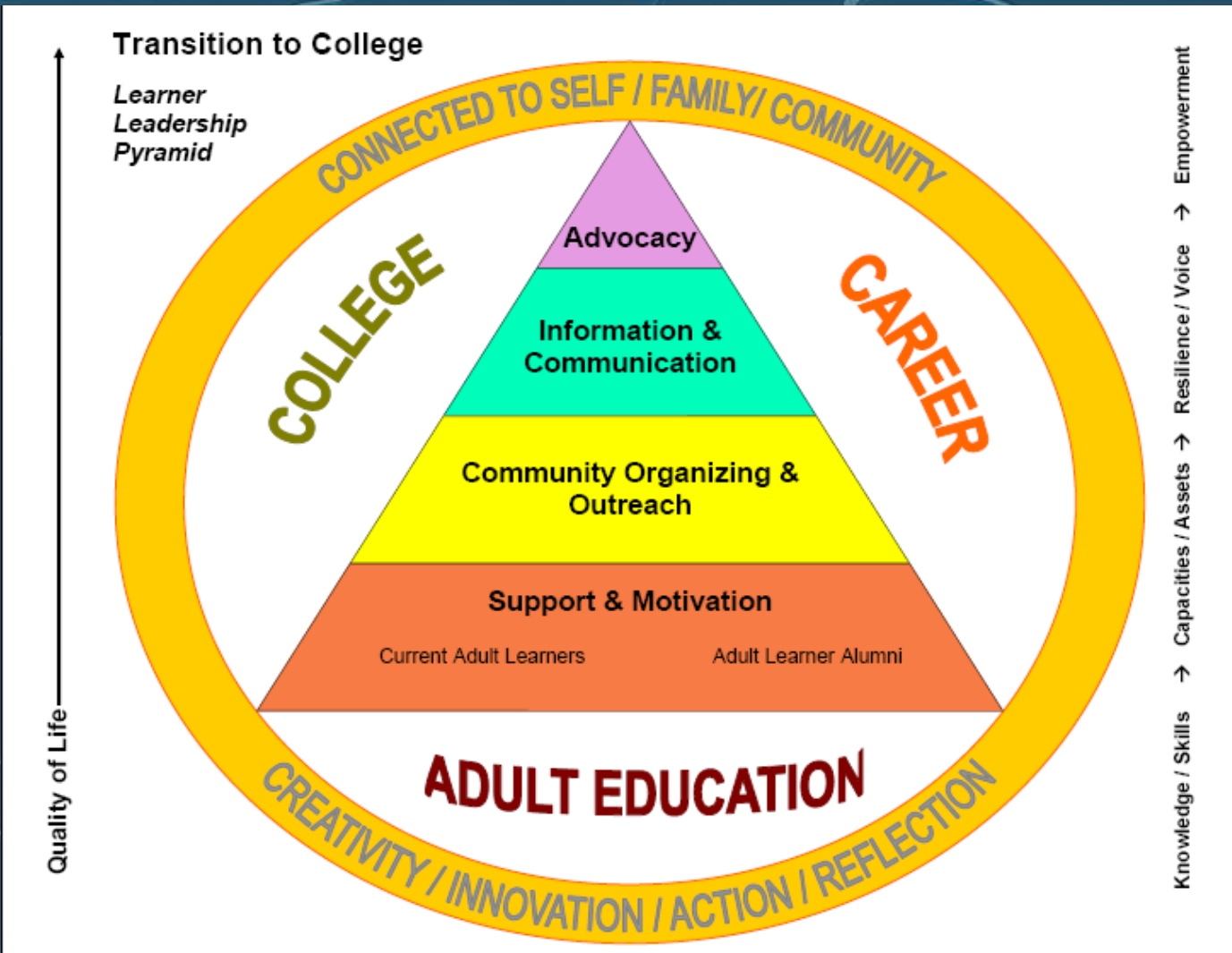
Building Social Capital

- Consequence of adult education leadership
 - Validation
 - Transformation of consciousness
 - Removal of internalized oppression
 - Self-perception
- Parents
- Workforce
- Next generation
- Less crime
- Empowered citizens



Strategies for Adult Learner Leadership

Learner Leadership Pyramid





Speaker's Bureau

The Speaker's Bureau was created to address leadership priorities of adult learners.

- Reached over 1000 adult education students
- T2C – most transformative effect most quickly
 - Learning by doing
 - Conquering fear / gaining confidence
 - Action reflection
 - Transforming relationship with self



Support & Motivation

- Reaching out, connecting, and sharing our experience with other adult learners- Modeling
 - We did it... you can do it too.
 - Models of success
 - Leadership is about creating more leaders



Community Organizing and Outreach

Building active networks for peer support and empowerment

- Staying connected
- Tracking one another (students)



Information and Communication

- Increase visibility, build support, and create life long learning in adult education



Advocacy

- Raise awareness of adult education
- Addressing the stigma
- Policy impact / planning



Intentional tools that support adult learner leadership partners

- Recognition
- Listening
- Self-examination / assessment
 - i.e. – personality type assessment



Adult Education

In the end
we are all
adult learners